

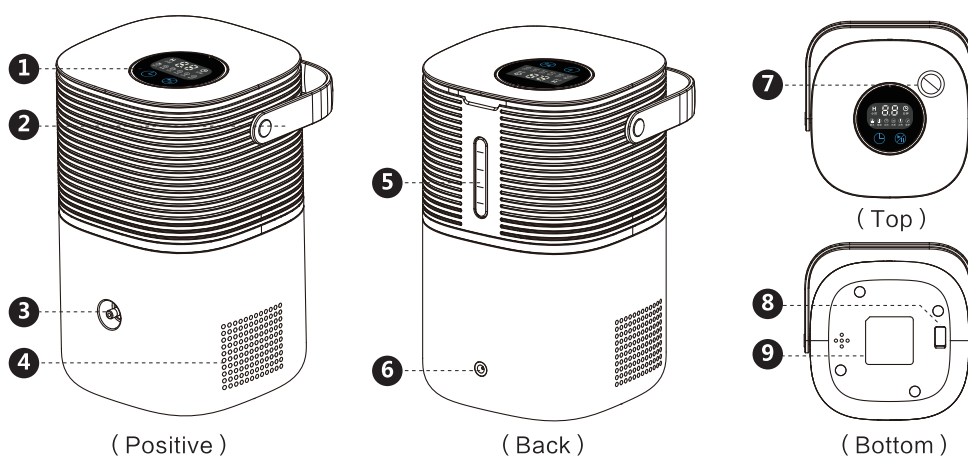
1. FUNCTION & FEATURE

- ① 99.996% H₂ gas output, high purity of hydrogen inhalation.
- ② The H₂ flow is 120ml/min with stable output pressure.
- ③ TDS water quality testing function is built into the water tank to monitor water quality in the tank timely.
- ④ Intelligent and safe protections against slant, overheat, over-pressure, and over-current, etc.

2. PRODUCT INTRODUCTION

1) MAIN UNIT

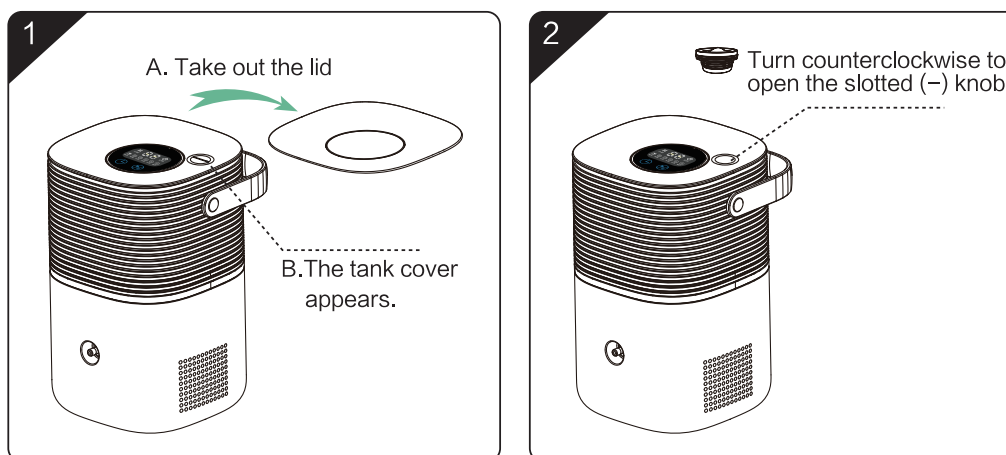
- ① Display & Operation Panel
- ② Handle
- ③ H₂ Outlet Hole
- ④ Heat Emission Hole
- ⑤ Water Volume Display
- ⑥ Power Jack
- ⑦ Pure Water Tank Cover (Take out the lid)
- ⑧ Water Drain Hole (Refer to draining method on P7)
- ⑨ Item Sticker



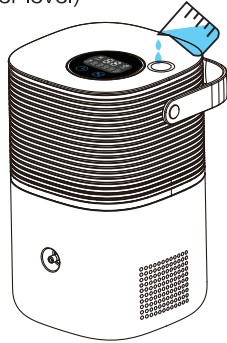
2) PARTS LIST & WARRANTY PERIOD

No.	Accessory	Quantity	Warranty Period	Remark
1	Main unit	1 PC	1 Year	
2	Power wire	1 PC	1 Year	
3	Adapter	1 PC	1 Year	
4	H2 nasal cannula	1 PC	—	Consumable
5	User manual	1 PC	—	

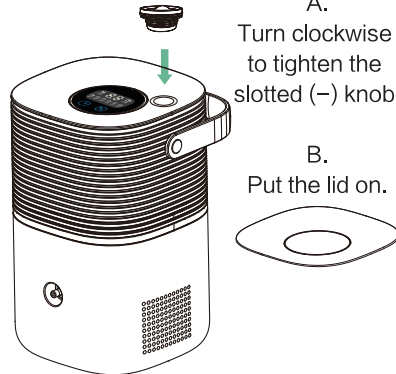
3. USAGE



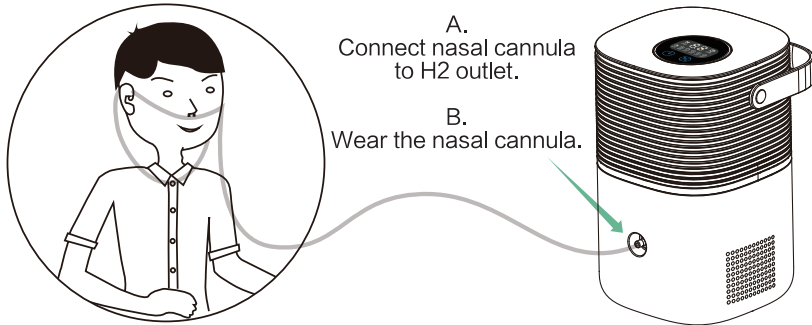
3 Fill with purified water.
(Note: Don't exceed the maximum water level)



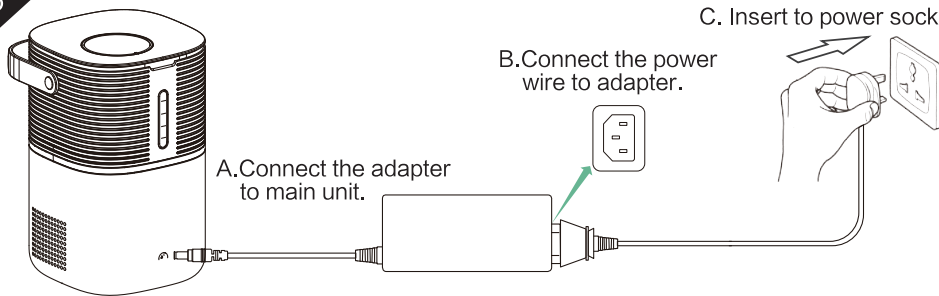
4
A. Turn clockwise to tighten the slotted (-) knob.
B. Put the lid on.

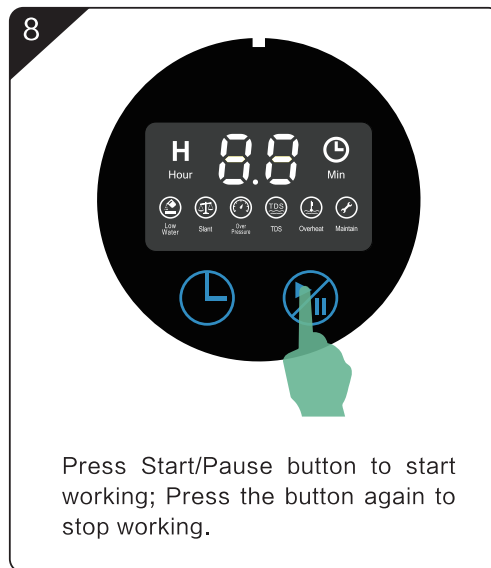
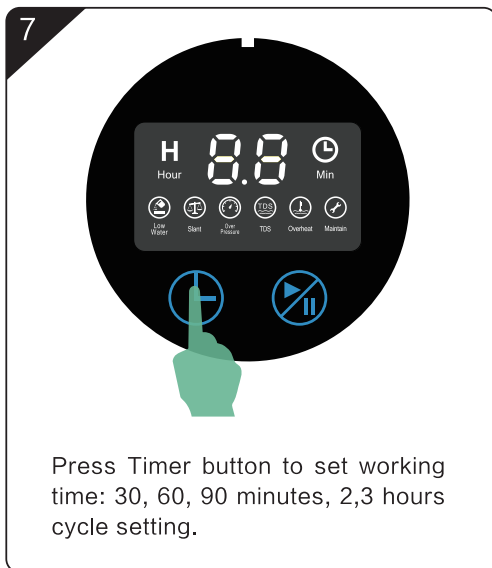


5
A. Connect nasal cannula to H2 outlet.
B. Wear the nasal cannula.

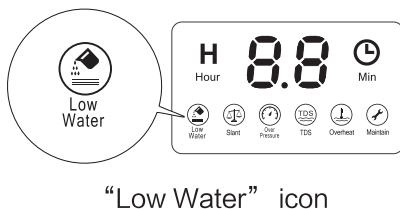


6
A. Connect the adapter to main unit.
B. Connect the power wire to adapter.
C. Insert to power socket.
"Dingtone" sound from buzzer after power on.



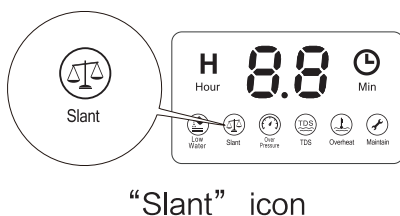


4. TESTING TIPS



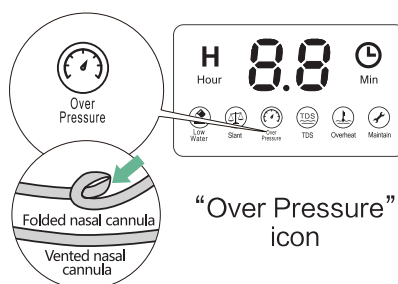
1. Low Water

Flashing "Low Water" icon on display and with Beep alarm indicates the water in the tank is in too low level. If short of water when working, the machine will automatically stop working and with Beep alarm, it will re-start working after adding enough water.



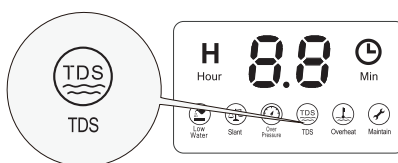
2. Slant

When the machine is standby or working, the "Slant" icon flashes when it is tilted, and a long Beep sound is to alarm, until it is laid flat or tilted at an angle less than 15 degrees.



3. Over Pressure

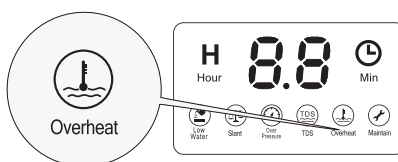
When the nasal cannula is folded and abnormal exhaust, the pressure in the cannula will be increases. When it reaches a certain pressure value, the machine stops working and the “Over Pressure” icon flashes and with Beep alarm. Please check whether the nasal cannula is folded, and shake the water dry, then reuse. Please replace new nasal cannula if the fault cannot be eliminated.



“TDS water quality” icon

4. TDS Water Quality

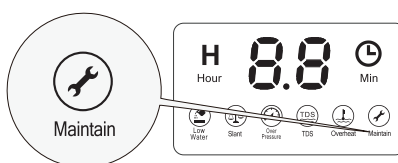
TDS water quality testing function is built into the water tank to monitor water quality. Water quality is divided into 3 grades, Excellent (Green light), Good (Yellow light), Bad (Red light).When water quality is “Bad”,red light flashes and the machine stop working with “TDS” icon flashing, meanwhile the Beep sound alarm. Please replace water into tank, it will work after recover to Excellent or Good grades. When the machine standby, the tank light displays green, yellow, orange, red to shows different grade of water quality.



“Overheat” icon

5. Overheat

When the internal H₂ production unit is overheat, the machine stops working to protect H₂ production unit, and “Overheat” icon flashes with Beep sound alarm. Let the machine cool down, then re-start working. If abnormal situation occurs, drain the water from the tank, and re-add water to speed up the cooling, then re-start the machine and observe the working.



“Maintain” icon

6. Maintain

If no H₂ output when working, it will display “Er” as machine fault. Please drain away water and re-start the machine, if the fault remaining, it needs depot repair.

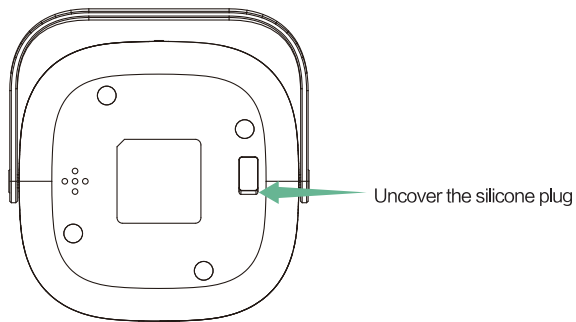
5. WATER DRAINING

It is recommended to drain away water from the tank if the following situation occurs:

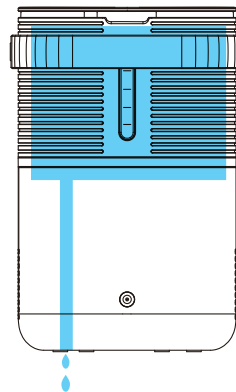
- Long haul
- Over heat
- Water is over max water level
- Adding improper water, low TDS water quality
- When working normally, no gas producing and failure “Er” icon display

DRAINAGE METHOD

- 1、Turn off the power.
- 2、Check the bottom of machine, uncover the silicone plug, then keep the water drain hole adown and water will be drained away.



(Check the bottom of machine)



(Keep the water drain hole adown and water will be drained away)

6.Notice

- ① Please add purified water or distilled water, water of other quality can damage the machine.
- ② When first use, do not use it for too long. It is recommended to use for 30 mins per day, and slowly extend the use time.
- ③ The nasal suction tube is dedicated, it is recommended to replace a new nasal cannula every 2 months, or every month if the frequency of use is high.
- ④ If not used for a long time, please drain away water and keep proper. Reuse requires the addition of fresh purified water.

7.Safety

- ① Please be sure to use it in a cool and ventilated environment. Please keep the vents open.
- ② Please keep the power supply stable.
- ③ Children must use the machine in company with an adult.
- ④ If you feel any unwell, please stop using immediately.

8.Precautions

- ① Details concerning precautions during user maintenance;
- ② The instructions state that the appliance is only to be used with detachable power supply unit and it must only be supplied at SELV;
- ③ For appliances for altitudes exceeding 2000 m, the maximum altitude is stated;
- ④ Instructions are also available in an alternative format such as on a website or in a format such as a DVD;
- ⑤ Uppercase letter of the text explaining the signal word not smaller than 1,6 mm;
- ⑥ This appliance can be used by children aged from 8 years and above and persons with reduced physical, sensory or mental capabilities or lack of experience and knowledge if they have been given supervision or instruction concerning use of the appliance in a safe way and understand the hazards involved;
- ⑦ Children shall not play with the appliance;
- ⑧ Cleaning and user maintenance shall not be made by children without supervision.